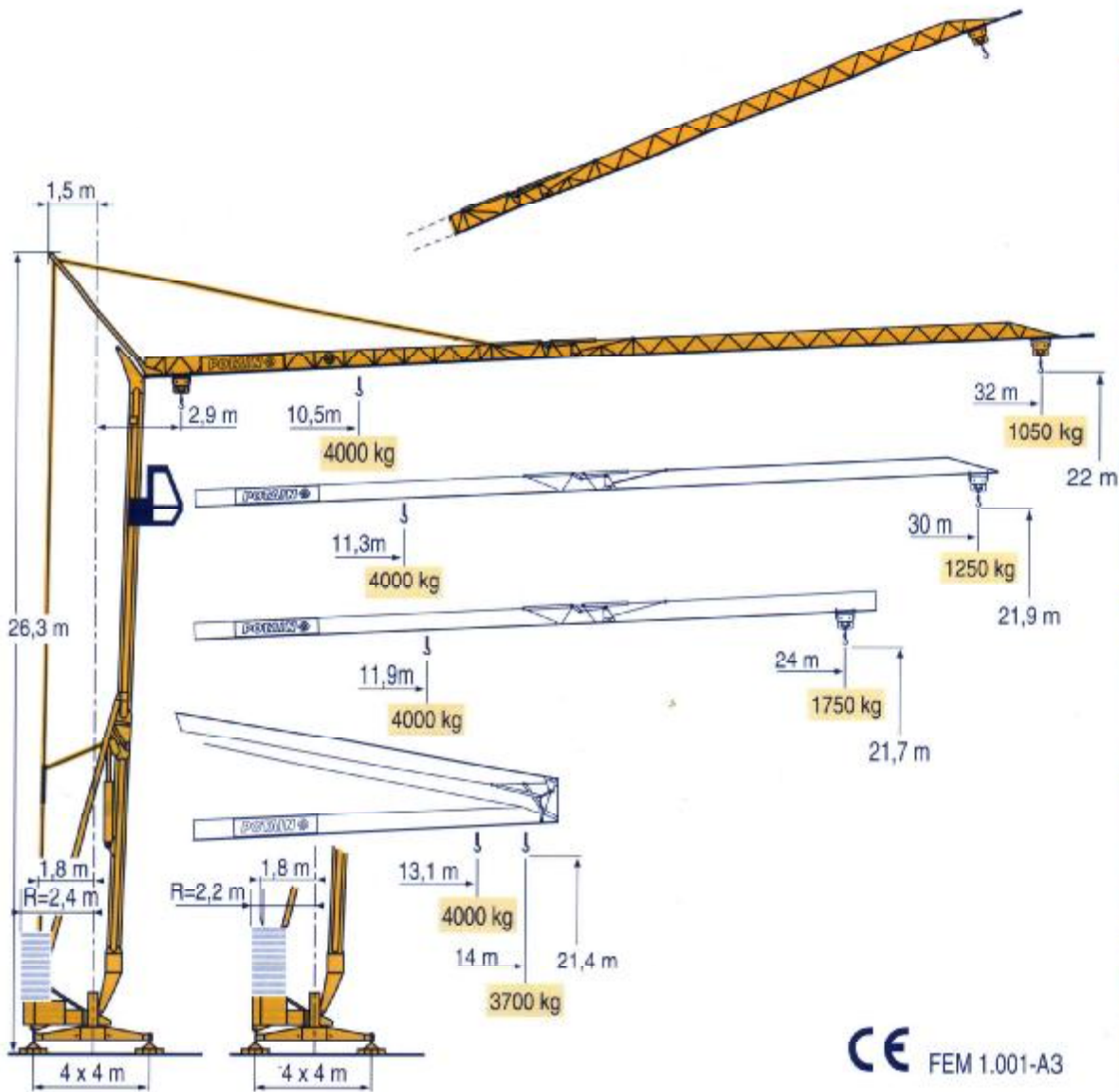


HD 36



- HD
- HDT
- GTMR
- CITY CRANE
- TOPKIT MD Topless MDT
- MR
- MAXI MD Topless MDT
- MAXI TOPKIT

CE FEM 1.001-A3



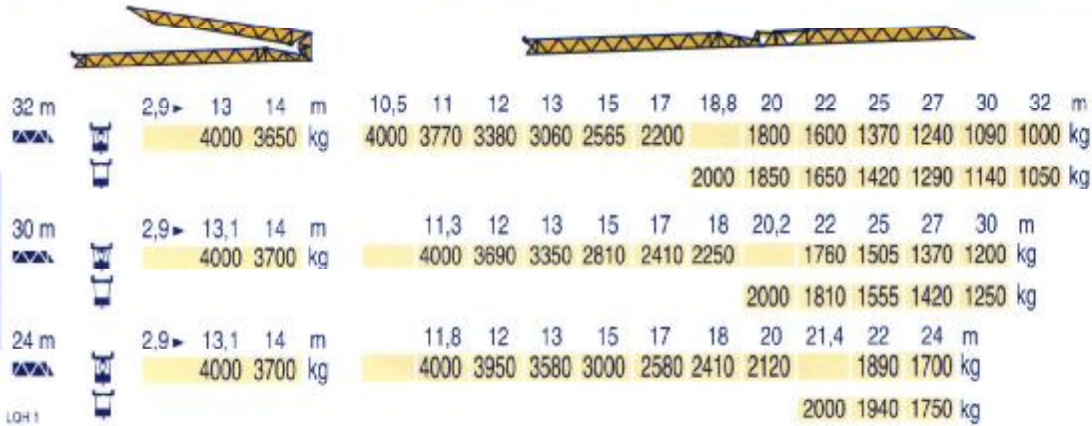
POTAIN 

Prospekt - HD 36 - barevný - 1 část.TIF

Courbes de charges
Lastkurven

Load diagrams
Curvas de cargas

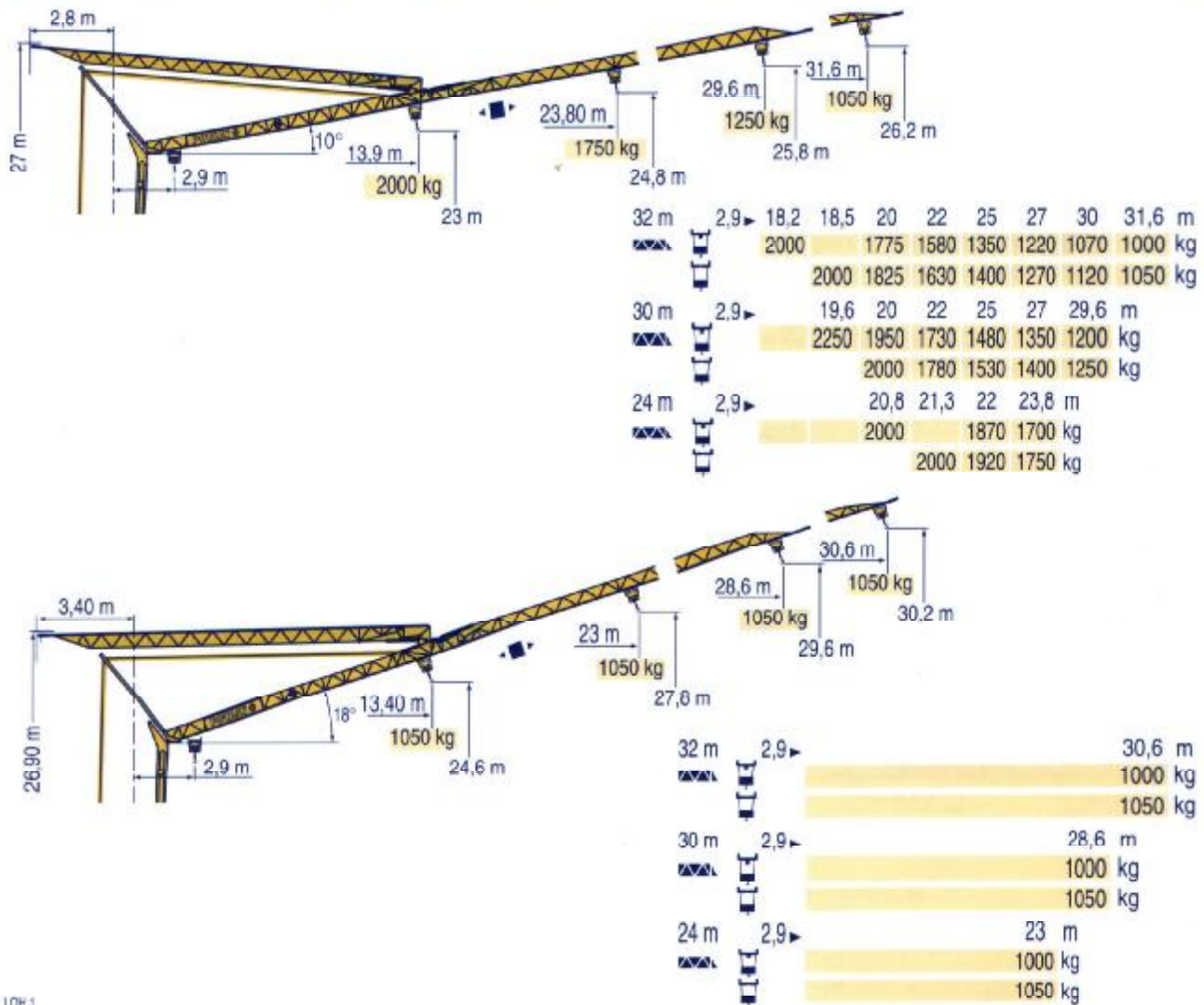
Curve di carico
负荷曲线



Flèche relevée
Ausleger in Steilstellung

Luffing jib
Flecha izada

Braccio impennato
起升吊臂



Chariot distributeur

Traversing trolley

Carrellino distributore

Verfahrbare Laufkatze

Carro distribuidor

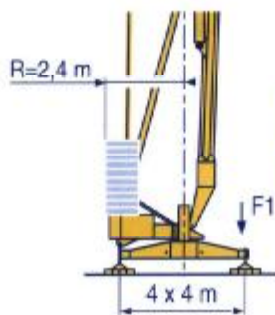
变幅小车

Réactions
Eckdrücke

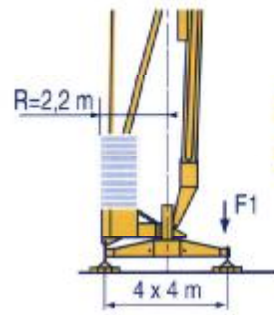
F Reactions
D Reacciones

GB Reazioni
E 反力

I
C



F1 ● 21,2 t ■ 13,9 t
▲ 11,3 t



F1 ● 21,6 t ■ 14,3 t
▲ 11,3 t

LQH 1

- Réactions en service
- Réactions hors service
- ▲ A vide sans lest ni train de transport avec flèche et hauteur maximum

F Reactions in service
D Reacciones en servicio
Reactions out of service
Reacciones fuera de servicio
Without load, ballast or transport axles, with maximum jib and maximum height.
Sin carga, sin lastre, ni tren de transporte, flecha y altura máxima.

GB Reazioni in servizio
E Reazioni fuori servizio
A vuoto, senza zavorra né assali di trasporto con braccio massimo e altezza massima

- Reaktionskräfte in Betrieb
- Reaktionskräfte außer Betrieb
- ▲ Ohne Last, Ballast und Transportachse, mit Maximalausleger und Maximalhöhe.

D Reacciones en servicio
E Reacciones fuera de servicio
Sin carga, sin lastre, ni tren de transporte, flecha y altura máxima.

I Reazioni in servizio
C Reazioni fuori servizio
A vuoto, senza zavorra né assali di trasporto con braccio massimo e altezza massima

Mécanismes
Antriebe

F Mechanisms
D Mecanismos

GB Meccanismi
E 机构

I
C

								ch - PS hp	kW	
▲	15 RPC 10 A	m/min	9	27	54	4,5	13,5	27	15	11
		kg	2000	2000	1000	4000	4000	2000		
◀ ▶	3 D2 V5/2	m/min						21 - 42	2,7	2
⊙	RVF 30	tr/min U/min rpm						0 → 0,2 → 0,8	1,5	1,1
CEI 38		kVA								
400 V (+6% -10%) 50 Hz		20 kVA			84/534 - 87/405					

LQH 1

- ▲ Levage
- ◀ ▶ Distribution
- ⊙ Orientation
- Conforme aux directives CEE 84/534 et 87/405 sur le niveau acoustique

F Hoisting
D Trolleying
E Slewing
In compliance with the EEC 84/534 and 87/405 Instructions on noise level

GB Sollevamento
E Distribuzione
I Rotazione
Conforme alle direttive CEE 84/534 e 87/405 sul livello acustico

- ▲ Heben
- ◀ ▶ Kätzfahren
- ⊙ Schwenken
- Gemäss EWG-Richtlinien 84/534 und 87/405 für den Schall-Leistungspegel

D Elevación
E Distribución
C Orientación
Conforme con las directivas CEE 84/534 y 87/405 sobre el nivel acustico

I 起升
C 变幅
回转
符合 CEE 84/534 - CEE 87/405 声响应规定

HD 36

POTAIN

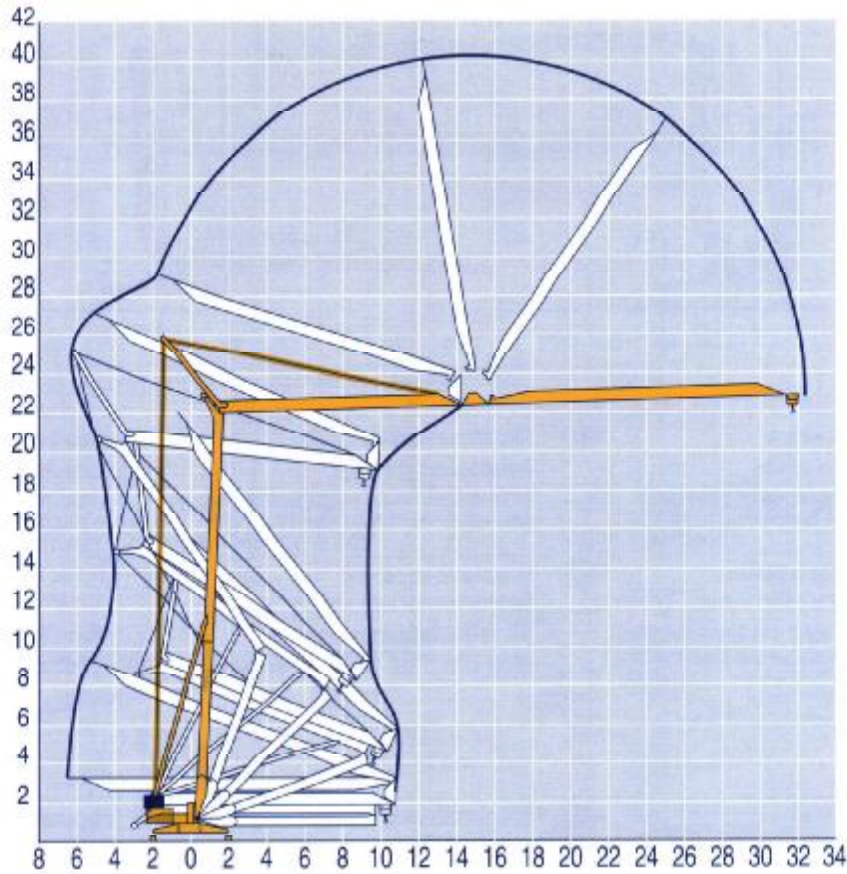
Prospekt - HD 36 - barevný - 3 část.TIF

Montage
Montage

F Erection
D Montaje

GB Montaggio
E 安装

I
C



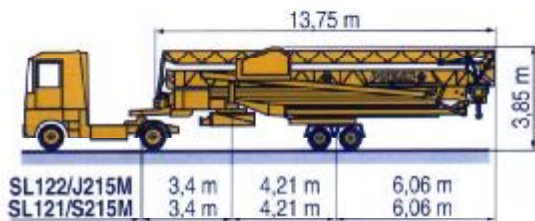
LQH 1

Transport
Transport

F Transport
D Transporte

GB Trasporto
E 运输

I
C



SL122/J215M	3,4 m	4,21 m	6,06 m
SL121/S215M	3,4 m	4,21 m	6,06 m



DS60/S105	2,4 m	4,1 m	6,17 m	H
DS80/J100	2,4 m	4,1 m	6,17 m	3,30/3,45 m
DJ126M/S105	2,5 m	4,52 m	5,75 m	3,45 m
DJ126M/S215M	3,3 m	4,21 m	6,06 m	3,9 m
CJ125M/J215M	3,3 m	4,21 m	6,06 m	3,9 m

SL122/J215M

SL121/S215M

CJ125M/J215M

DJ126M/S215M

DJ126M/S105

DS60/S105

DS80/J100

LQH 1

○ Chantier
○ Baustelle

F Site
D Obra

GB Cantiere
E 工地运输

I
C

POTAIN
GRUPE LEGRIS INDUSTRIES

18, Rue de Charbonnières, B.P. 173-F
69132 ECULLY Cedex
Tél. (33)04.72.18.20.20
Fax (33)04.72.18.20.00
http://www.potain.fr
E-mail : mkt@potain.fr

HD 36

Copyright, Reproduction interdite © POTAIN 1999

Deutschland
POTAIN GmbH Tel : 06.105.704.0
Italia
POTAIN S.p.A. Tel : 039.65.631
Singapore
POTAIN PTE LTD Tel : (00.65) 227.1550

Réf. 1998.47 LQH 1

Modificazioni riservate / Modifications réservées / Modifiche riservate / 修改权在彼方

Printed in France

Realisation SODIPE