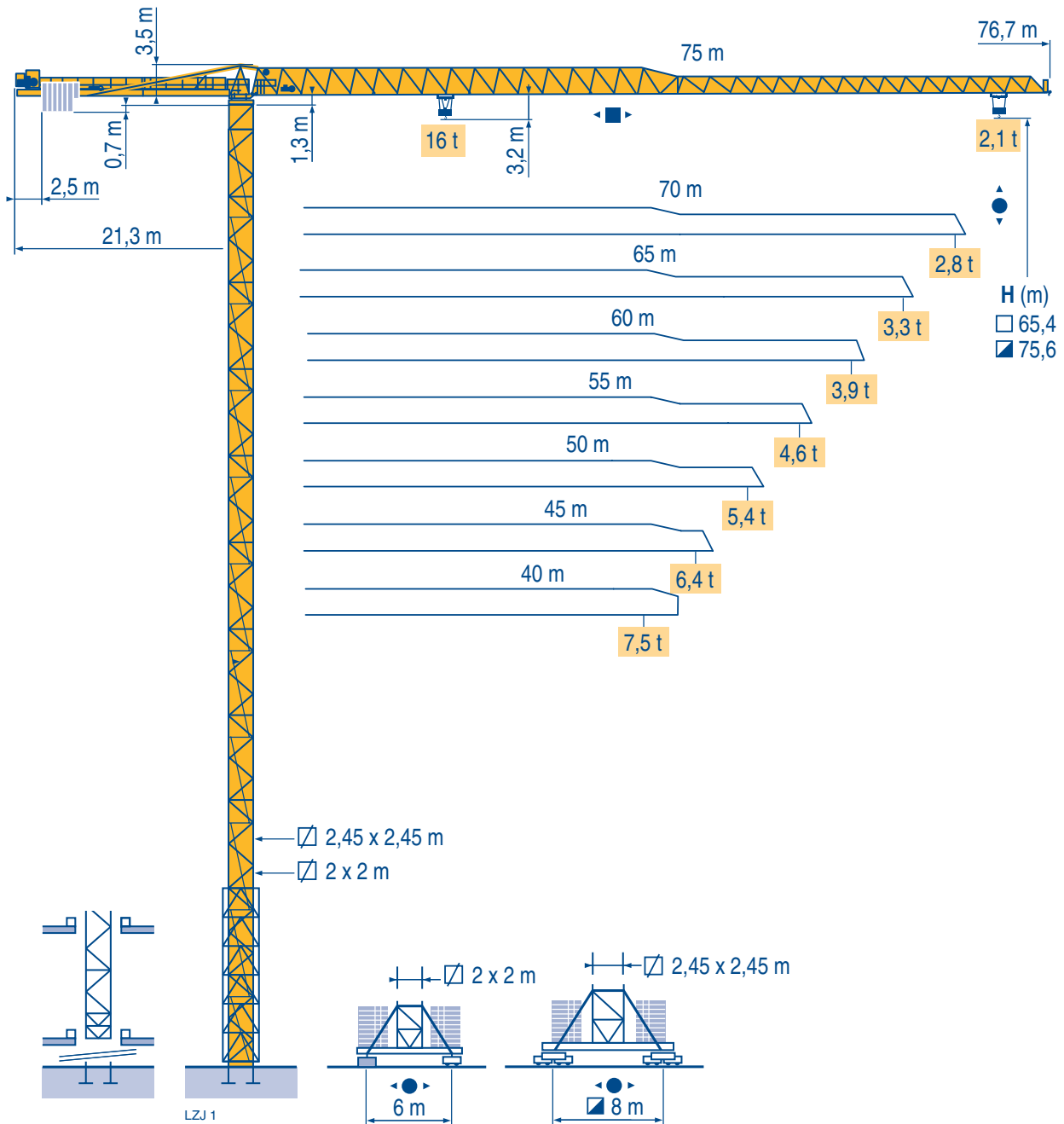


## MDT 302 L16

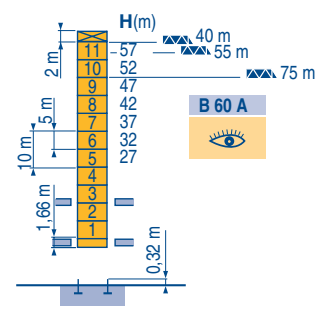
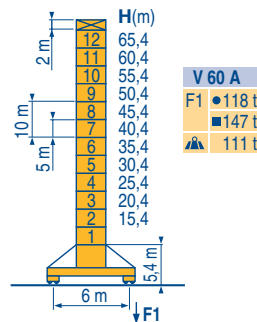
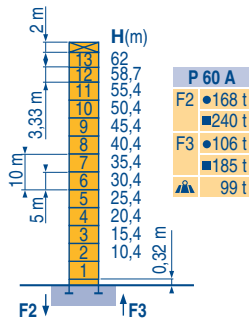


### Topless

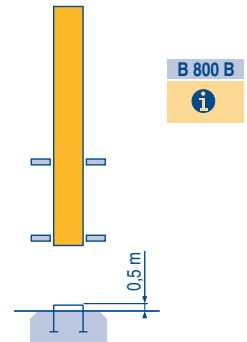
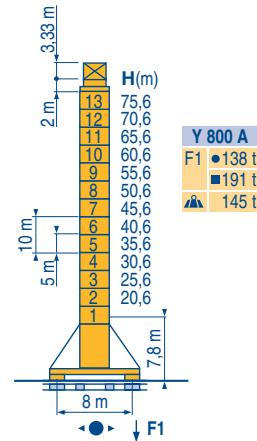
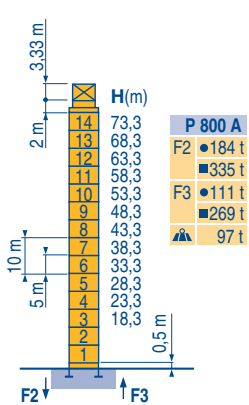
CE FEM 1.001-A3

Mat / Réactions  $\square$  2 m  
 Maste / Eckdrücke  $\triangle$  40 m  $\Rightarrow$  75 m  
 Masts / Reactions  
 Mástil / Reacciones  
 Torre / Reazioni  
 Tramo / Reações

L2/1

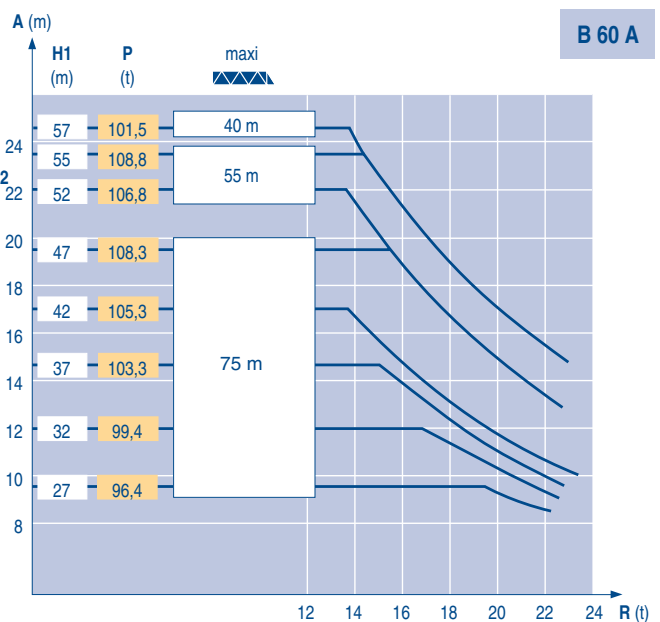
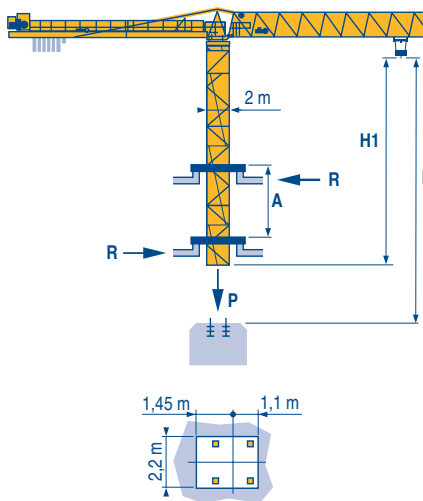


$\square$  2,45 m  
 $\triangle$  40 m  $\Rightarrow$  75 m



Télescopage sur dalles  
 Kletterkrane im Gebäude  
 Climbing crane  
 Telescopage gruas trepadoras  
 Gru in cavedio  
 Telescopagem sobre lages

L2/1



Topless  
 MDT 302 L16

POTAIN

F	D	GB	E	I	P
● Réactions en service ■ Réactions hors service A vide sans lest (ni train de transport) avec flèche et hauteur maximum.	● Reaktionskräfte in Betrieb ■ Reaktionskräfte außer Betrieb Ohne Last, Ballast (und Transportachse), mit Maximalausleger und Maximalhöhe.	● Reactions in service ■ Reactions out of service Without load, ballast (or transport axes), with maximum jib and maximum height.	● Reacciones en servicio ■ Reacciones fuera de servicio Sin carga, sin lastre, (ni tren de transporte), flecha y altura máxima.	● Reazioni in servizio ■ Reazioni fuori servizio A vuoto, senza zavorra (ne assali di trasporto) con braccio massimo e altezza massima.	● Reações em serviço ■ Reações fora de serviço Sem carga (nem trem de transporte)- sem lastro com lança e altura máximas.
Nous consulter	Auf Anfrage	Consult us	Consultarnos	Consultateci	Consultar-nos

### Courbes de charges

### Lastkurven

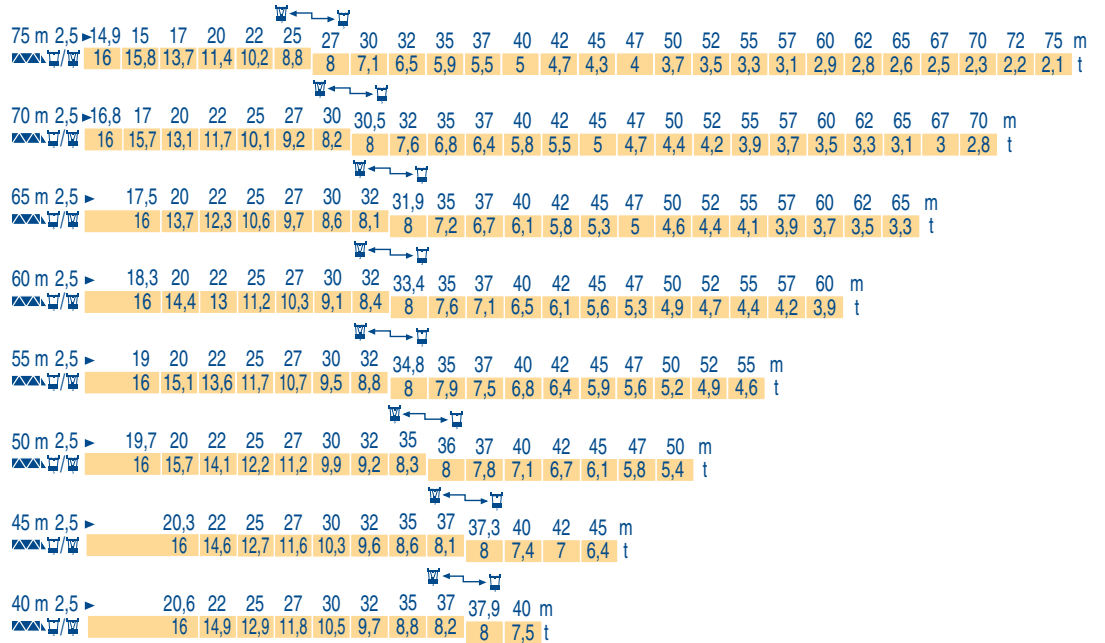
### Load diagrams

### Curvas de cargas

### Curve di carico

### Curva de cargas

L2J 1



### Lest de contre-flèche

### Gegenauslegerballast

### Counter-jib ballast

### Lastre de contra flecha

### Contrappeso

### Lastros da contra lança

L2J 1

	3 150 kg - 2 100 kg		
	75 LVF 40	66 S 4,0 L 880	
	(kg)	(kg)	
75 m	21,3 m	22 050	21 000
70 m	21,3 m	21 000	18 900
65 m	21,3 m	22 050	19 950
60 m	21,3 m	18 900	17 850
55 m	21,3 m	18 900	17 850
50 m	21,3 m	16 800	15 750
45 m	21,3 m	15 750	13 650
40 m	21,3 m	13 650	11 550

### Lest de base - Grundballast

### Base ballast - Lastre de base

### Zavorra di base - Lastros da base

L2J 1

V	H (m)	65,4	60,4	55,4	50,4	45,4	40,4	35,4	30,4	25,4	20,4	15,4	
		(t)	120	84	60	60	60	60	60	60	60	60	
2 m	V 60 A												
V	H (m)	75,6	70,6	65,6	60,6	55,6	50,6	45,6	40,6	35,6	30,6	25,6	20,6
		(t)	156	120	84	60	60	60	60	60	60	60	60
2,45 m	Y 800 A												

### Topless













### MDT 302 L16

**POTAIN**

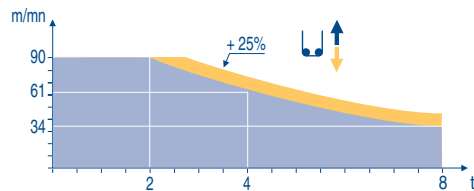
	F	D	GB	E	I	P
<b>A</b>	Distance entre cadres	Abstand zwischen den Rahmen	Distance between collars	Distancia entra marcos	Distanza fra i telai	Distância entre quadros
<b>H1</b>	Hauteur grue	Kranhöhe	Crane height	Altura grúa	Altezza gru	Altura da grua
<b>P</b>	Poids de la grue (en service)	Krangewicht (in Betrieb)	Crane weight (in service)	Peso de la grúa (en servicio)	Peso della gru (in servizio)	Peso da grua (em serviço)
<b>R</b>	Réaction horizontale	Horizontalkräfte	Horizontal reaction	Reaccion horizontal	Reazione orizzontale	Reacção horizontal
	Voir télescopage sur dalles	Siehe Kletterkrane im Gebäude	See climbing crane	Vea grua trepadora	Consultare gru in cavedio	Ver telescopagem sobre lages






Mécanismes  
Antriebe  
Mechanisms  
Mecanismos  
Meccanismi  
Mecanismos

LZJ 1

														ch - PS hp	kW	
	75 LVF40 Optima	m/min	2,6 → 11 → 34 → 44 → 61 → 90	1,3 → 5,6 → 17 → 22 → 31 → 45	75	55	610 m									
	6 DVF 4	m/min	0 → 42 (16 t) - 0 → 84 (8 t) - 0 → 100 (4 t)						5,5	4						
	RVF 163 Optima +	tr/min U/min rpm	0 → 0,7						3 x 7,5	3 x 5,5						
	V 60 A RT 544 A1 2V R ≥ 13 m	m/min	13,5 - 27						4 x 7	4 x 5,2						
	Y 800 A	m/min														
CEI 38			IEC 38													
400V (+6%-10%) 50 Hz		75 LVF : 105 kVA		2000 / 14												

75 LVF 40  
Optima



	F	D	GB	E	I	P
	Levage	Heben	Hoisting	Elevación	Sollevamento	Elevação
	Distribution	Katzfahren	Trolleying	Distribución	Distribuzione	Distribuição
	Orientation	Schwenken	Slewing	Orientación	Rotazione	Rotação
	Translation	Kranfahren	Travelling	Traslación	Traslazione	Translação
	Conforme aux directives CEE sur le niveau acoustique	Gemäss EWG-Richtlinien für den Schall-Leistungspegel	In compliance with the EEC Instructions on noise level	Conforme con las directivas CEE sobre el nivel acustico	Conforme alle direttive CEE sul livello acustico	Conforme as directivas CEE sobre o nível acústico



Document commercial non contractuel. Pour toute information technique se référer à la notice correspondante

Unverbindliches Vertriebsdokument. Für technische Informationen, siehe die entsprechenden Anweisungen.

This commercial document is not legally binding. For any technical information, please refer to the corresponding instructions.

Documento comercial no contractuel. Para cualquier información técnica, ver la noticia correspondiente.

Documento commerciale non vincolante, per tutte le informazioni tecniche fare riferimento al catalogo istruzioni

Documento comercial não contractual. Para qualquer informação técnica complementar consultar as respectivas instruções

**Manitowoc**  
Crane CARE

**POTAIN**   
Manitowoc Crane Group



**Americas**  
Tel: +1 920 683 6322  
Tel: +1 717 597 8121

**Europe - Middle East - Africa**  
Tel: +(33) 4 72 81 50 00  
Tel: +(44) 191 565 6281

**Asia - Pacific**  
Tel: +(65) 6861 7133  
Fax: +(65) 6862 4142

www.manitowoccrane.com

18, rue de Charbonnières - B.P.173  
69132 ECULLY Cedex - France

Tél. : (33) 4 72 18 20 20  
Fax. : (33) 4 72 18 20 00  
www.manitowoccrane.com www.potain.com

**Topless MDT 302 L16**

Réf. 2003 48 LZJ 1

Copyright.Reproduction interdite © POTAIN 2003

Réalisation HeadLines